

Anne Curtis' Choice


T A G A Y T A Y C I T Y

SMDC

The good guys!

The logo for SMDC (SM Development Corporation) features the letters "SMDC" in a bold, red, sans-serif font. The text is centered within a bright yellow rectangular background.

The good guys!

Every single day, SM touches lives of millions of people through its stores, malls, banks, hotels and leisure facilities. And now, Filipinos can live in style, comfort and convenience at SM Development Corporation (SMDC).

SMDC commits itself to provide access to luxurious urban living through vertical villages perfectly integrated with a commercial retail environment, giving its residents a truly cosmopolitan lifestyle.

SMDC developments are strategically situated in key areas across Metro Manila specifically the Central Business of Makati, Ortigas, Quezon City, Pasay and Parañaque.

SITE DEVELOPMENT PLAN

Olympus
Tower

McKinley
Tower

Everest
Tower

Rushmore
Tower

Aspen
Tower

LAND AREA: 15.45 hectares

LOCATION: Tagaytay City

NUMBER OF BUILDINGS: 10 Buildings

NUMBER OF FLOORS PER BUILDING: 20 Floors

All information stated is intended to give a general overview of the project. The developer reserves the right to modify as it sees fit without prior notice.

LOCATION



Along Aguinaldo Highway, Barangay Maharlika West, Tagaytay City.

AMENITY AREA



AMENITIES

**Experience a taste of 5-Star living
with these luxury amenities.**



Basketball Court



Badminton Courts



Tennis Court



Swimming Pools



Garden / Lawn



Playground Area



Jogging Paths



Clubhouse



Function Rooms



Recreational Area



Property Management services are also available for a variety of needs, like unit leasing, general maintenance and housekeeping. Enjoy these privileges for reasonable rates.

All information stated is intended to give a general overview of the project. The developer reserves the right to modify as it sees fit without prior notice.

BUILDING FLOOR PLANS

FACING ALFONSO / SILANG CAVITE



-  Resort Residential 1
-  Commercial Units

FACING TAAL LAKE

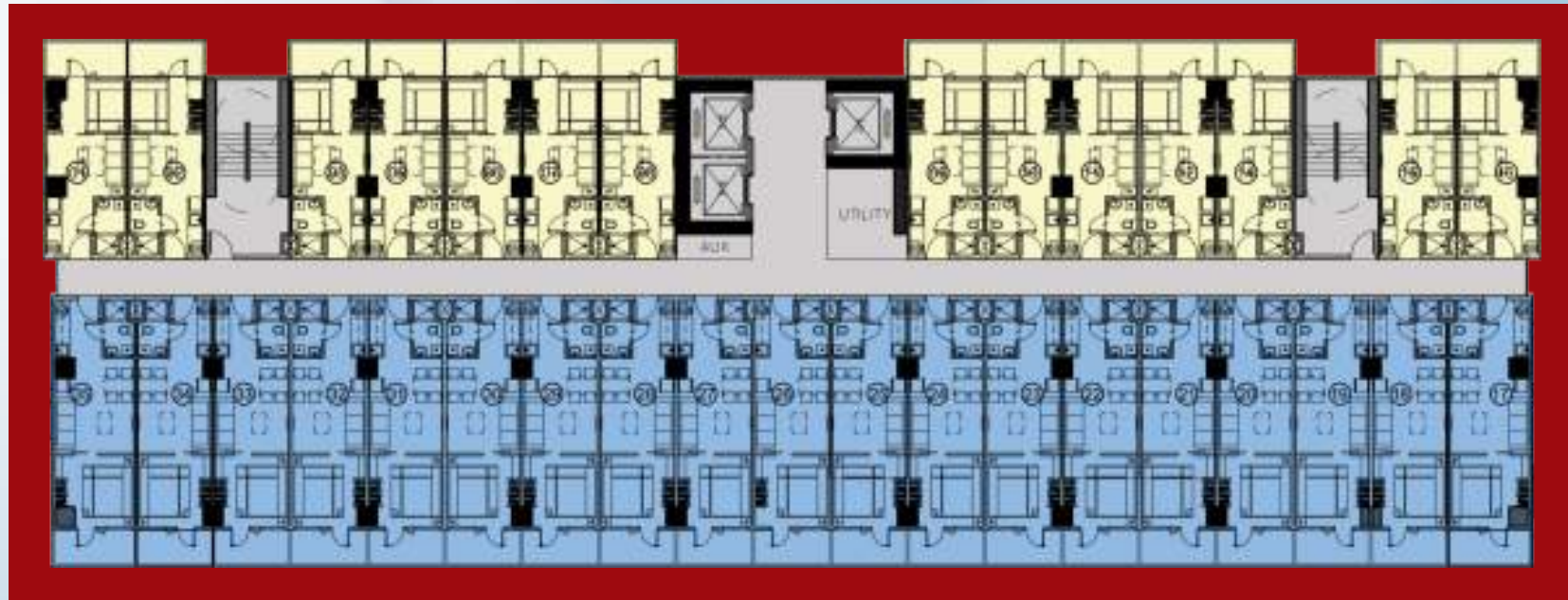
UPPER GROUND Floor Plan


Tower 1

All information stated is intended to give a general overview of the project. The developer reserves the right to modify as it sees fit without prior notice.

BUILDING FLOOR PLANS

FACING ALFONSO / SILANG CAVITE



-  Resort Residential 1
-  Resort Residential 2

FACING TAAL LAKE



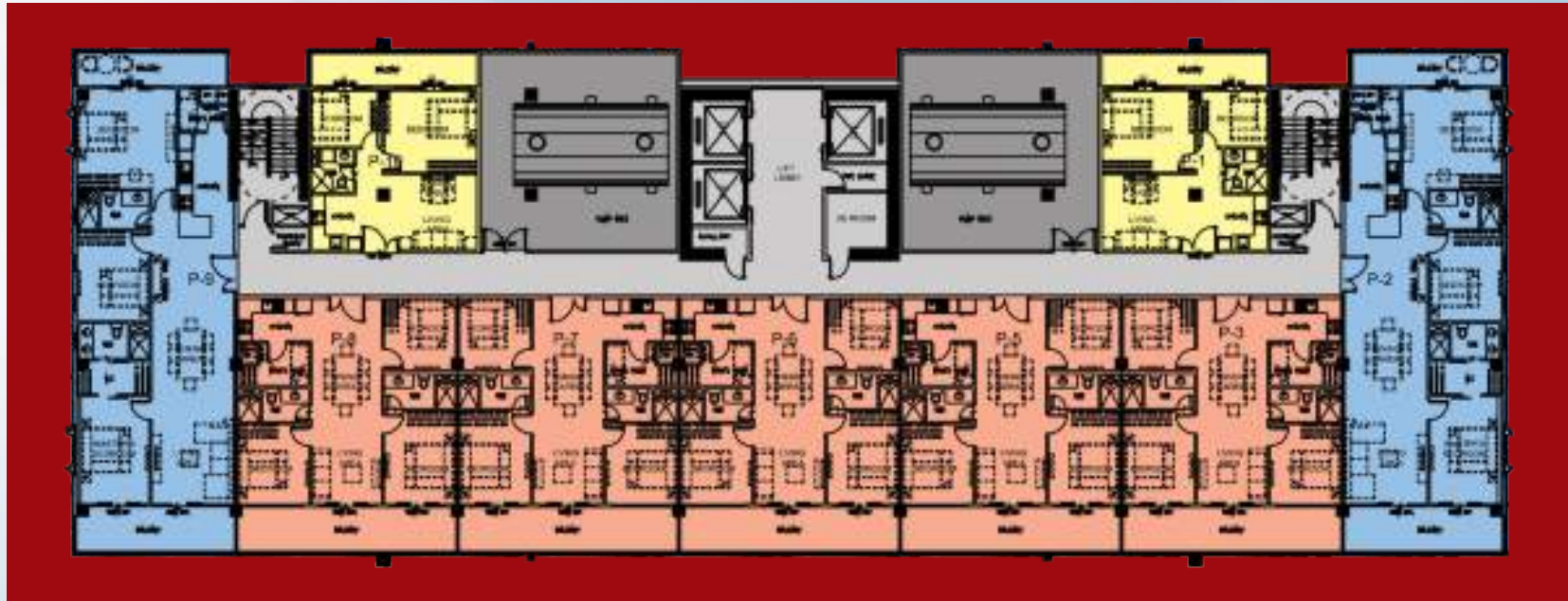
Typical Floor Plan: 2nd to 23rd

Tower 1


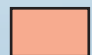

All information stated is intended to give a general overview of the project. The developer reserves the right to modify as it sees fit without prior notice.

BUILDING FLOOR PLANS

FACING ALFONSO / SILANG CAVITE



FACING TAAL LAKE

-  2-Bedroom Penthouse Unit w/ Balcony
-  3-Bedroom Penthouse Unit w/ Balcony
-  3-Bedroom Deluxe Penthouse Unit w/ Balcony

PENTHOUSE Floor Plan

Tower 1

All information stated is intended to give a general overview of the project. The developer reserves the right to modify as it sees fit without prior notice.



UNIT FLOOR PLANS



Resort Residential Unit 1
28.20 sqm.



Resort Residential Unit 2
34.81 sqm.



Tower 1

All information stated is intended to give a general overview of the project. The developer reserves the right to modify as it sees fit without prior notice.

UNIT FLOOR PLANS

PENTHOUSE UNITS



**2-Bedroom Penthouse
Unit w/ Balcony
63.36 sqm.**



**3-Bedroom Penthouse
Unit w/ Balcony
104.42 sqm.**



**3-Bedroom Deluxe Penthouse
Unit w/ Balcony
148 sqm.**

Tower 1

All information stated is intended to give a general overview of the project. The developer reserves the right to modify as it sees fit without prior notice.

BUILDING FLOOR PLANS

FACING ALFONSO / SILANG CAVITE



FACING TAAL LAKE

UPPER GROUND Floor Plan



Tower 2

All information stated is intended to give a general overview of the project. The developer reserves the right to modify as it sees fit without prior notice.

BUILDING FLOOR PLANS

FACING ALFONSO / SILANG CAVITE



FACING TAAL LAKE

Typical Floor Plan: 2nd to 23rd

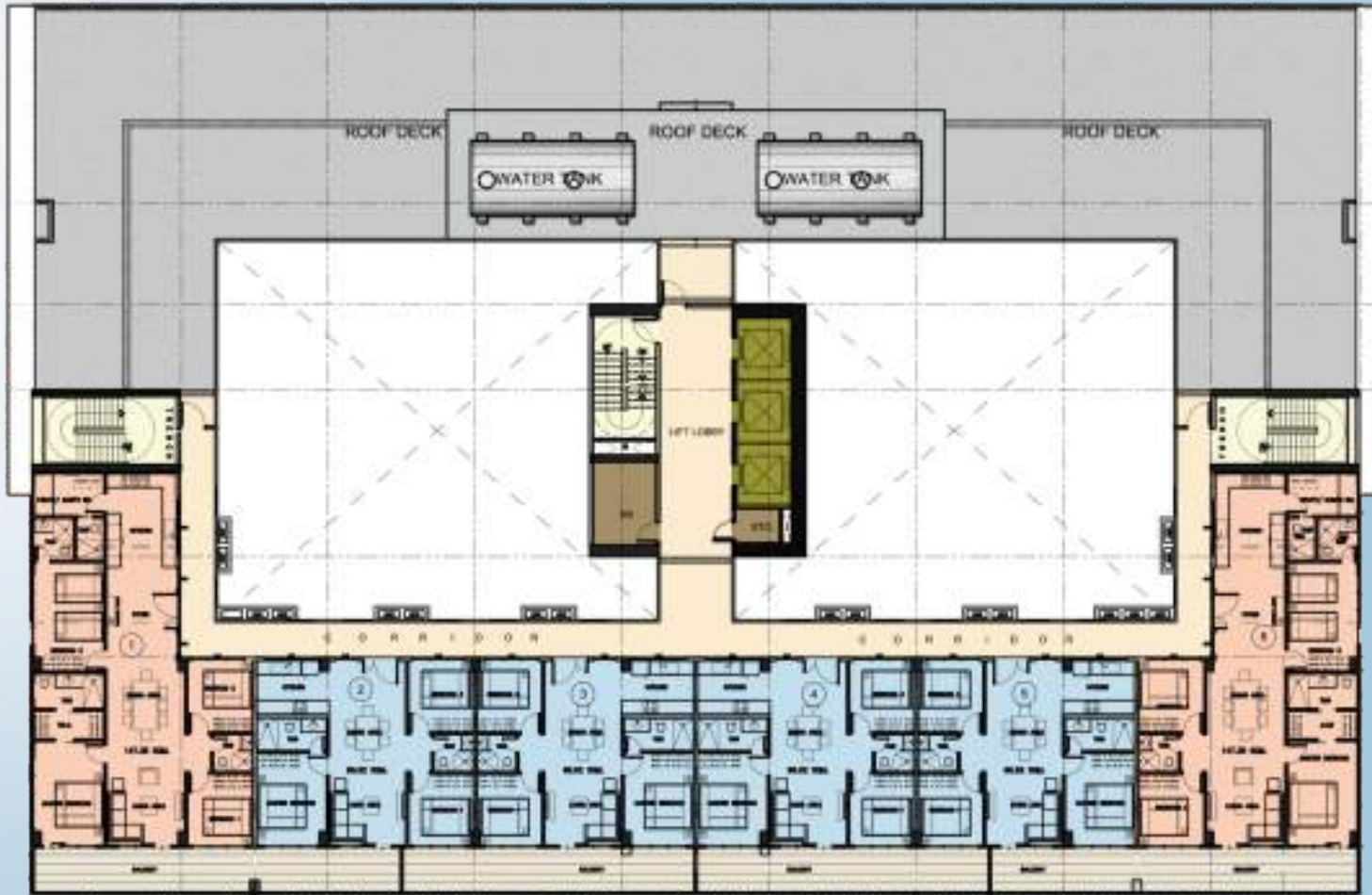
Tower 2

All information stated is intended to give a general overview of the project. The developer reserves the right to modify as it sees fit without prior notice.



BUILDING FLOOR PLANS

FACING ALFONSO / SILANG CAVITE



FACING TAAL LAKE

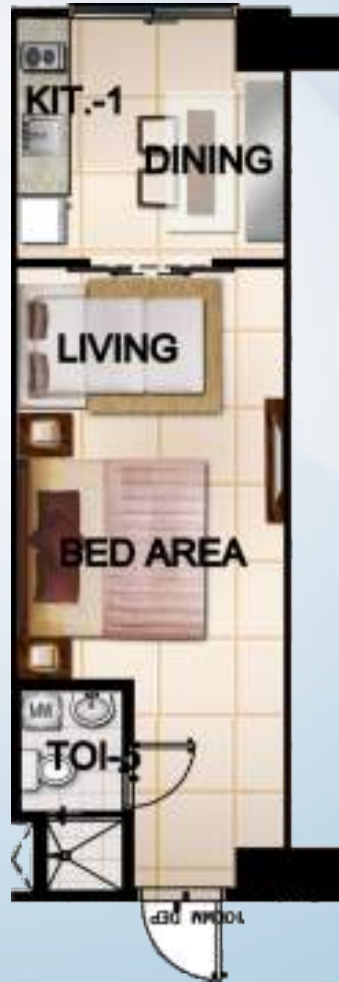
Penthouse Floor Plan



Tower 2

All information stated is intended to give a general overview of the project. The developer reserves the right to modify as it sees fit without prior notice.

UNIT FLOOR PLANS



Resort Residential Unit 1
31.97 sqm.



Resort Residential Unit 2
26.62 sqm.



Deluxe Unit End
20.64 sqm.



UNIT FLOOR PLANS

PENTHOUSE UNITS



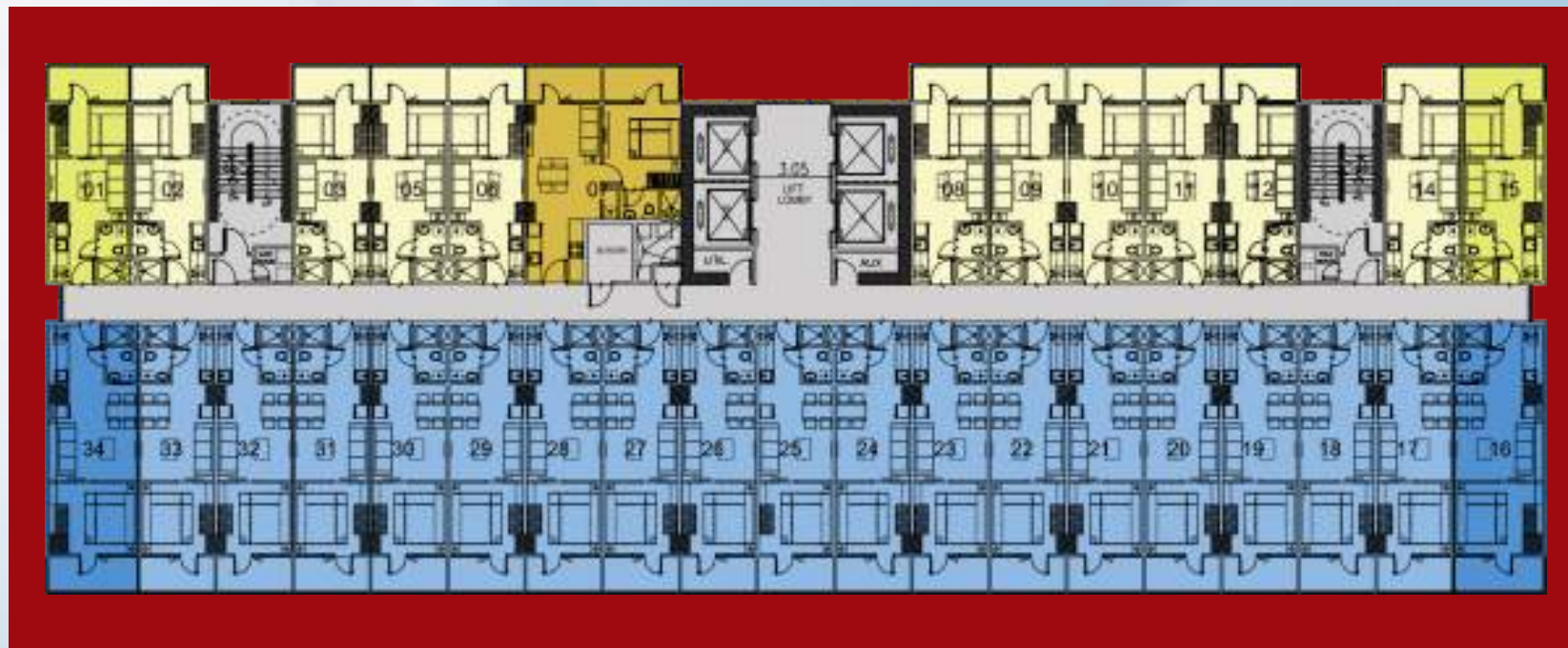
3-Bedroom Unit with Balcony
95.91 sqm.




4-Bedroom Unit with Balcony
147.42 sqm.

BUILDING FLOOR PLANS

FACING ALFONSO / SILANG CAVITE



-  Resort Residential 1
-  Resort Residential 1 End Units
-  Resort Residential 1 Deluxe
-  Resort Residential 2
-  Resort Residential 2 End Units

FACING TAAL LAKE

Typical Floor Plan: 2nd to 23rd

Tower 3

All information stated is intended to give a general overview of the project. The developer reserves the right to modify as it sees fit without prior notice.






BUILDING FLOOR PLANS

FACING ALFONSO / SILANG CAVITE



ALFRESCO AREA

-  Resort Residential 1
-  Resort Residential 1 End Units
-  Resort Residential 1 Deluxe

FACING TAAL LAKE



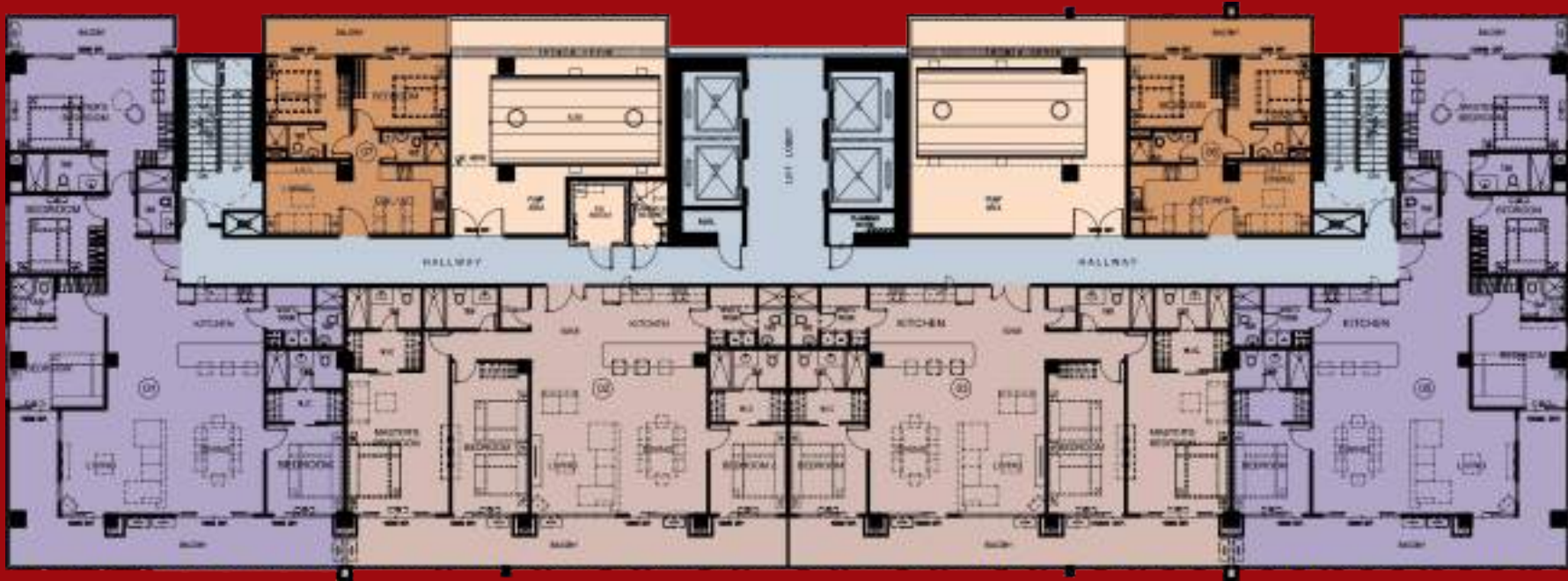
Tower 3

UPPER GROUND Floor Plan




All information stated is intended to give a general overview of the project. The developer reserves the right to modify as it sees fit without prior notice.

BUILDING FLOOR PLANS

FACING ALFONSO / SILANG CAVITE



FACING TAAL LAKE

-  4 Bedroom End Unit
-  3 Bedroom with Balcony
-  2 Bedroom Unit



Penthouse Floor Plan

Tower 3

All information stated is intended to give a general overview of the project. The developer reserves the right to modify as it sees fit without prior notice.

UNIT FLOOR PLANS



Resort Residential 1
28.27 sqm.



Resort Residential 2
34.89 sqm.



Resort Residential 1-End Unit
30.74 sqm.

UNIT FLOOR PLANS



Resort Residential 2 End Unit
41.81 sqm.



Resort Residential 1 Deluxe Unit
47.11 sqm.

UNIT FLOOR PLANS

PENTHOUSE UNITS



2-Bedroom Unit with Balcony
63.36 sqm.



3-Bedroom Unit with Balcony
192.31 sqm.



4-Bedroom Unit with Balcony
216.63 sqm.

BUILDING FLOOR PLANS

FACING AMENITY AREA



- Resort Residential 2
- Resort Residential 1
- Resort Residential 2 End Unit
- 1 Resort Residential 1 End Unit
- Resort Residential 3

FACING TAAL LAKE

Typical Floor Plan: 3rd to 21st

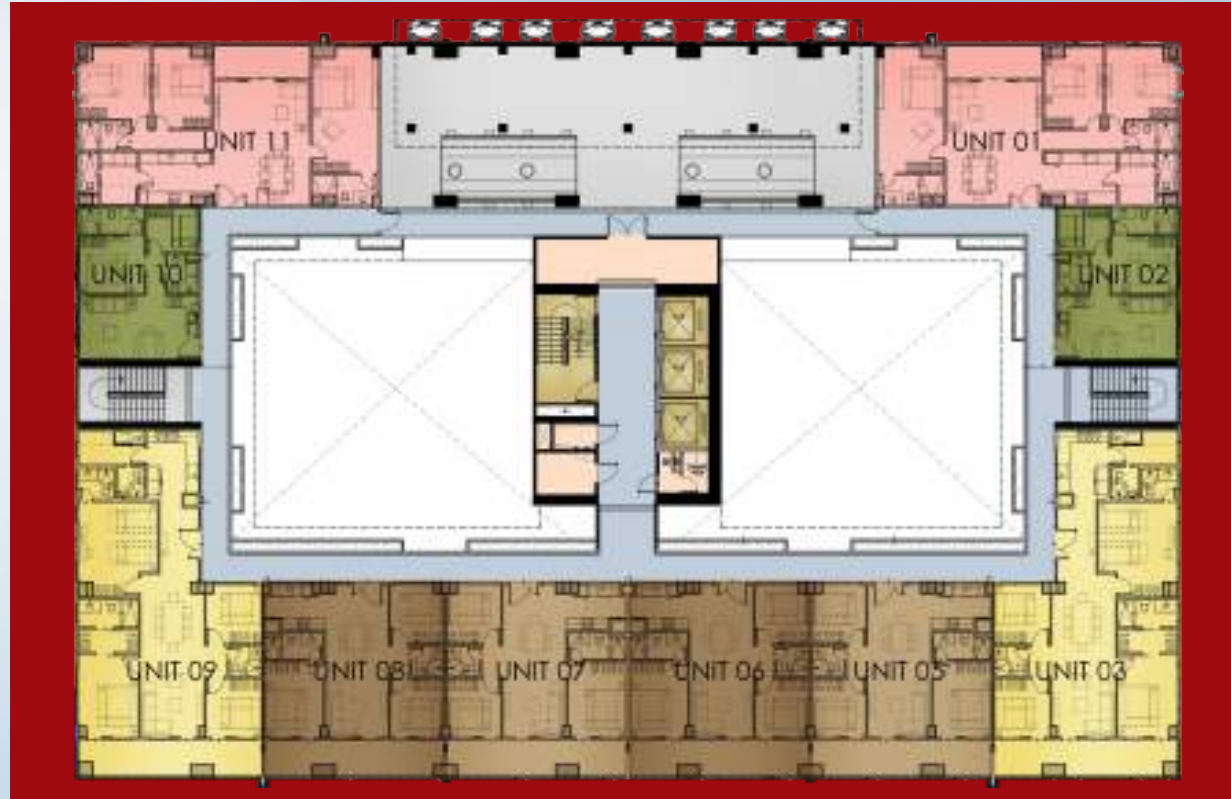
Tower 4

All information stated is intended to give a general overview of the project. The developer reserves the right to modify as it sees fit without prior notice.



BUILDING FLOOR PLANS

FACING ALFONSO / SILANG CAVITE



- 2 Bedroom Unit
- 3 Bedroom Unit
- 3 Bedroom Unit
- 4 Bedroom Unit

FACING TAAL LAKE

Penthouse Floor Plan

Tower 4

All information stated is intended to give a general overview of the project. The developer reserves the right to modify as it sees fit without prior notice.

UNIT FLOOR PLANS



Resort Residential 1
26.62 sqm.



Resort Residential 2
31.97 sqm.



Tower 4

All information stated is intended to give a general overview of the project. The developer reserves the right to modify as it sees fit without prior notice.

UNIT FLOOR PLANS



Resort Residential 1 End Unit
28.52 sqm.



Resort Residential 2 End Unit
34.26 sqm.

UNIT FLOOR PLANS



Resort Residential 3
41.76 sqm.



UNIT FLOOR PLANS

PENTHOUSE UNITS



2-Bedroom Unit
51.96 sqm.



3-Bedroom Unit 1
95.96 sqm.



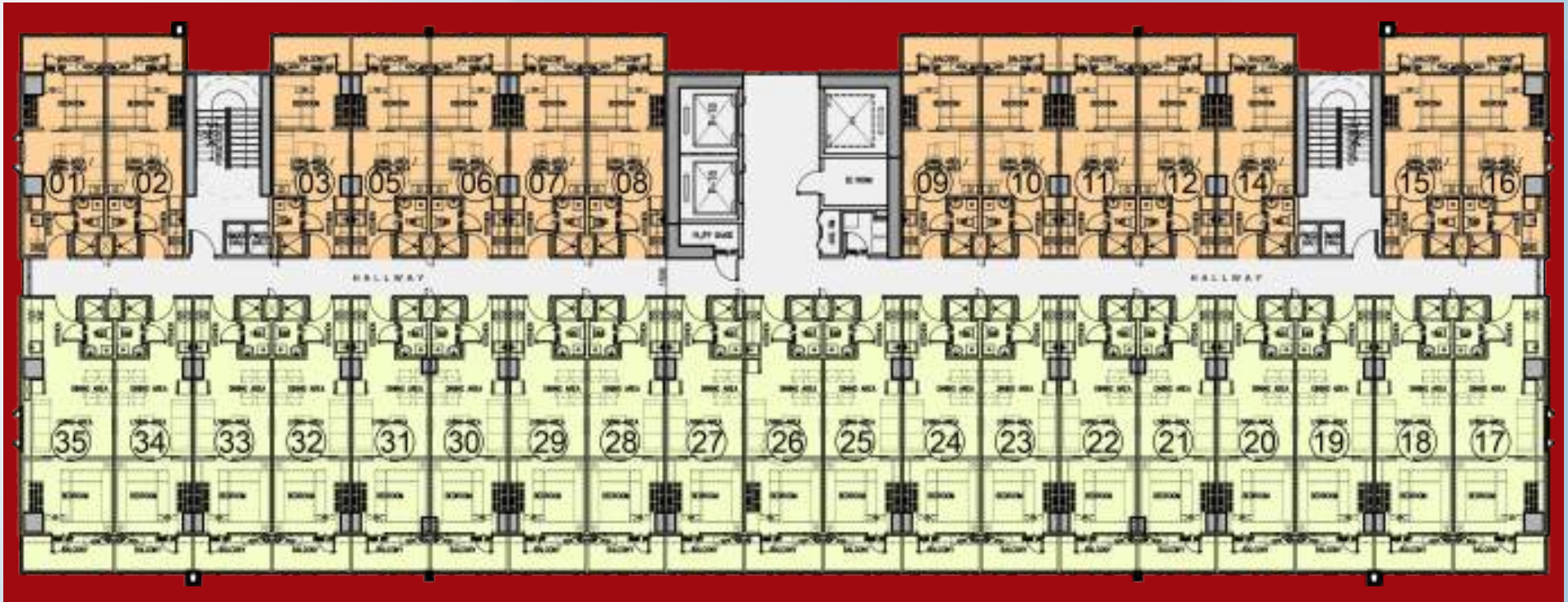
4-Bedroom Unit
149.73 sqm.





3-Bedroom Unit 2
132.60 sqm.

BUILDING FLOOR PLANS

FACING AMENITY AREA



-  Resort Residential Unit -1
-  Resort Residential Unit -2

FACING TAAL LAKE



Typical Floor Plan: 2nd to 23rd

Tower 5

All information stated is intended to give a general overview of the project. The developer reserves the right to modify as it sees fit without prior notice.

UNIT FLOOR PLANS



Resort Residential Unit -1
28.19 sqm.



Resort Residential Unit -2
34.89 sqm.

